



CR10 Tool Carrier

Working on embankments and hard-to-reach places

CR10 tool carrier

The Herder CR10 is a powerful and radio-controlled tool carrier specially designed for professionals. Due to its compact design and low center of gravity, the CR10 is the ideal machine for working in hard-to-reach places and steep slopes of up to 55 degrees. Embankments, steep slopes or places where the tractor with a boom attachment is difficult to reach are no problem for the Herder CR10.

This multifunctional machine can be equipped with different types of attachments, such as a forest flail mower, a flail mower with a hydraulic folding front or a stump cutter. This makes the CR10 a versatile tool carrier and far more than just a mowing machine.

The CR10 is powered by a Hatz 55 hp water-cooled 3-cylinder diesel engine as standard. Also available, a Hatz 75 hp 4-cylinder, depending on your needs.



Exceptionally versatile and safe

The CR10 is a versatile tool carrier from Herder, which can be used for the most diverse purposes and in the most challenging circumstances.

The CR10 is remote controllable. This allows you to choose a position with the best view of the work while maintaining a safe environment. Due to the powerful engine, high quality tracks with extra grip and sturdy frame, the CR10 is an extremely reliable machine.



Basic version

- PowerView display with engine control functions
- LED lighting at the rear
- Valve to prevent lowering on the lifting frame
- Quick change hydraulic couplings
- Double acting cylinder function
- Hydraulic extendable track undercarriage (30cm)
- Hydraulic level control on the tracks with switchable pendulum action



Options

- Side shift max 40cm
- Reversible fan on radiator
- Hydraulic float position
- Extra double-acting function for cylinder
- LED work lights on the front
- Certified lashing eyes





Maximum performance under all conditions

Hydraulic perfection

The CR10 is designed for working on steep slopes, which is why the machine offers so many unique features. One of the unique features is the hydraulic adjustable tracks. Placing the tracks at the widest position, provides extreme stability needed for working on steep slopes.



Innovative in every way

- Multifunctional tool carrier
- Compact design
- Max. climbing angle up to 55 °
- Remote-controlled

Unique design

The CR10 is the only machine on the market featuring a Hydraulic adjustable track angle (front / rear) with an electric switchable pendulum position of the tracks.

When engaged, both tracks can swing independently of each other, making them both 100% ground position dependent. This results in maximum possible grip on extremely steep slopes while preventing the machine from twisting.



LED lighting for maximum visibility



Various (hydraulic) connections are standard



Width adjustable tracks



Hydraulic pendulum / adjustment cylinder



Independent swinging tracks for optimal ground following and grip

Various Tools

The CR10 is specially designed as a tool carrier. Multifunctionality, safety and a low center of gravity have been the starting points for the development. Hence, the CR10 is ideally suited for working with a wide range of attachments. A small selection of available attachments includes; Stump cutter, Flail mower, Forest flail mower and Weed brush.



Stump cutter



Weed brush



Cylindrical brush



Leaf blower



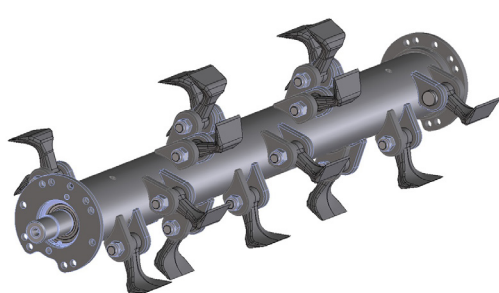
Flail mower



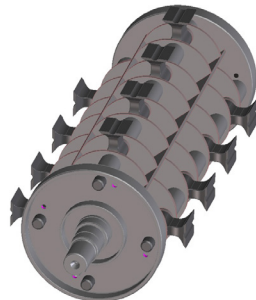
Portal mower with cutter bar

Flail mower

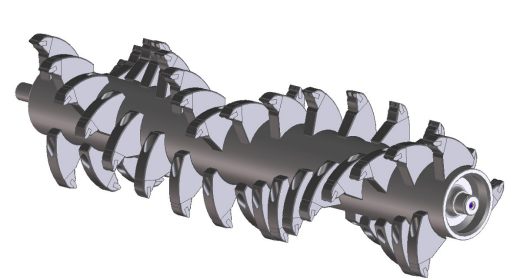
With the Flail Mower you can choose from 3 different types of rotor shafts. Each rotor shaft has its own qualities, properties and application. Of course, you can always contact one of our experts, for further information and advisement.



Standard flails for grass, branches and shrubs up to \varnothing 6-8 cm



Forestry rotor with fixed chisels for branches and shrubs up to \varnothing 10-12 cm



Forestry rotor with flails that can be rotated 360 ° for grass, branches and shrubs up to \varnothing 10-12 cm

Specifications Herder CR10

	55 HP Motor	75 HP Motor
Dimensions (LxWxH without tool)	2,16 x 1,38 x 1,18 m	2,16 x 1,38 x 1,18 m
Width tracks extended	1,68 m	1,68 m
Width tracks retracted	1.36 m	1.36 m
Lifting range tool	30 cm to 90 cm	30 cm to 90 cm
Ground clearance	0,20 m	0,20 m
Mass (without tool)	1.300 kg	1.350 kg
Ground pressure (without tool)	192 gr/cm ²	192 gr/cm ²
Max. mass of separate implement	500 kg	500 kg
Motor	Hatz 3-cilinder 40 kW/ 55HP	Hatz 4-cilinder 55 kW/ 75HP
Emission class	Stage 3B / Tier 4 final / Stage 5	Stage 3B / Tier 4 final / Stage 5
Turning radius	0 m	0 m
Driving speed	Max. 14.5 km/h	Max. 14.5 km/h
Climbable slope	55°	55°
Type of cooling	Water cooled	Water cooled
Fuel tank	40 l	40 l
Hydraulic tank	22 l	22 l
Electrical installation	12 V (85 Ah)	12 V (85 Ah)
Type of controle	Remote-controlled	Remote-controlled
Tool drive	Hydraulic, closed circuit	Hydraulic, closed circuit
Quick relase type	DPC Mounting plate	DPC Mounting plate



Herder BV

Herculesweg 6, 4338 PL Middelburg, The Netherlands

T: +31 (0)118 679500 | **E:** info@herder.nl | **W:** www.herder.nl